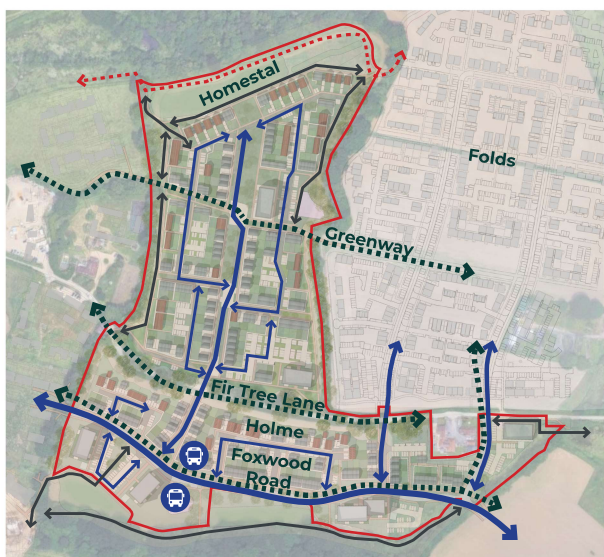
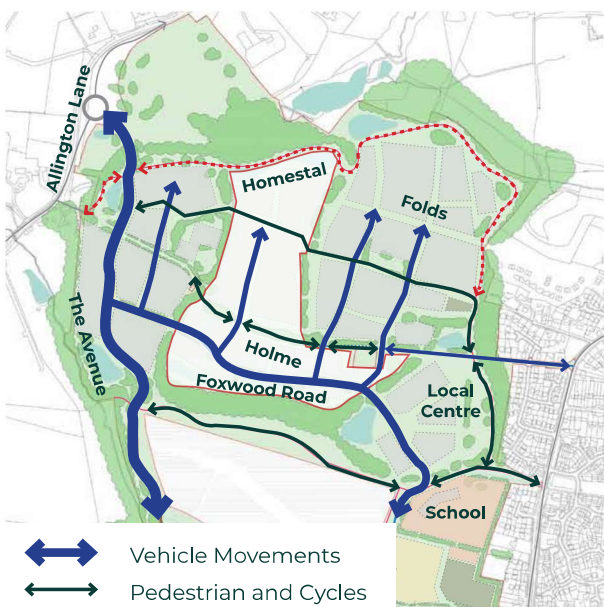


## Transport & Parking

### What are we proposing?



- Vehicle Movements
- Main Pedestrian and Cycling Routes
- Other Pedestrian and Cycles Routes
- Public Right of Way



- Vehicle Movements
- Pedestrian and Cycles
- Public Right of Way



- **Foxwood Road** travels through The Holme linking the site to the wider masterplan



- New local junctions will serve the new homes
- Parking provisions have been **carefully planned** to balance the future needs of residents



- A **high quality walking and cycling greenway** will run east-west, linking The Avenue and the Local Centre



- **Safe and direct** footpaths and cycleways will follow key roads and provide direct routes



- Well-designed crossings at key points provide **safe and convenient** access

- **Fir Tree Lane transformed**, removing vehicles and creating a new bridleway for pedestrians and cyclists

- **New links** will connect into the improved **public rights of way**



- **New bus stops** along the main internal road will connect residents to the wider network.

- **Regular services** will support sustainable travel and reduce reliance on cars.



- The Avenue provides the principal means of access to Hedge End (south) and Fair Oak (north).



- The secondary internal road will guide **local traffic** from The Avenue to The **Holme and The Homestall** residential areas.

- The retained vehicular part of Fir Tree Lane is intended **for local access only**

- **Prioritising active travel** through high quality landscaping, way-finding, and crossing points supporting walkable neighbourhoods.

