

Draft



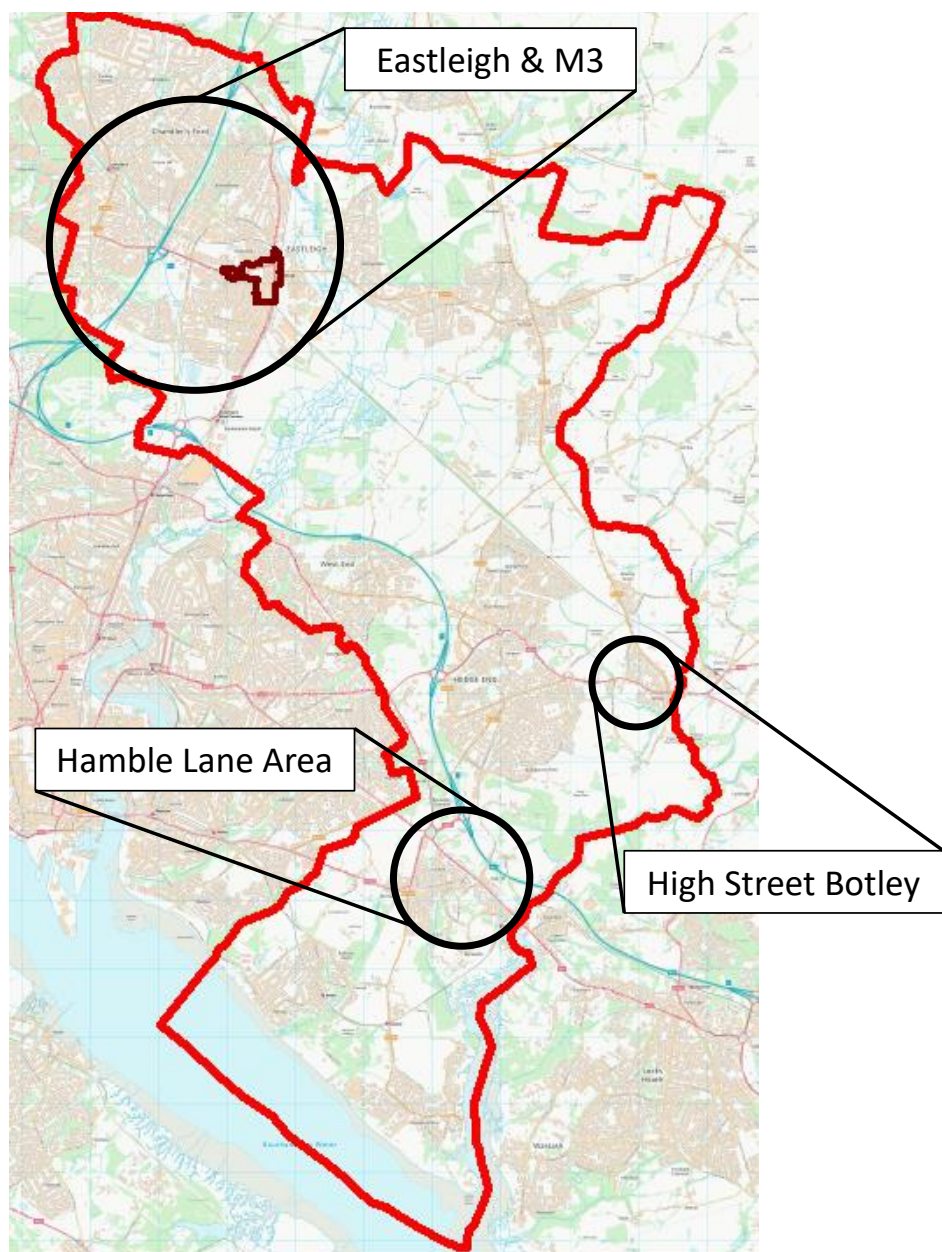
Air Quality Action Plan 2020 - 2025



This document is a summary of proposed actions for a new Air Quality Action Plan, which will aim to improve air quality in Eastleigh Borough from 2020 to 2025. Once you have read the document you will have the chance to comment and provide us with your thoughts.

Introduction

Eastleigh Borough Council is committed to reducing the exposure of people in the Borough to poor air quality in order to improve health and wellbeing. The Council recently declared a climate change and environment emergency and this plan is one of the initiatives that will support this work. As part of the Council's responsibility to review and assess air quality across the Borough there is a long history of monitoring and delivering initiatives to tackle air quality issues. Air pollution is made up of many components, with nitrogen dioxide, ozone and particulate matter being the most important. Sources of these include transport, industrial processes and the heating of businesses and homes including solid fuel burning. Air pollution levels are compared to objective levels set by the government, and where pollutant concentrations exceed these levels an Air Quality Management Area (AQMA) must be declared and an Air Quality Action Plan produced, which details actions aimed at reducing pollutant levels to below the objective.



Current air quality in Eastleigh Borough

There are currently four AQMAs in Eastleigh Borough:

- ▶ Eastleigh (includes Southampton Road, Romsey Road & Leigh Road)
- ▶ M3 (from Junctions 12 to 14)
- ▶ High Street Botley
- ▶ Hamble Lane Area

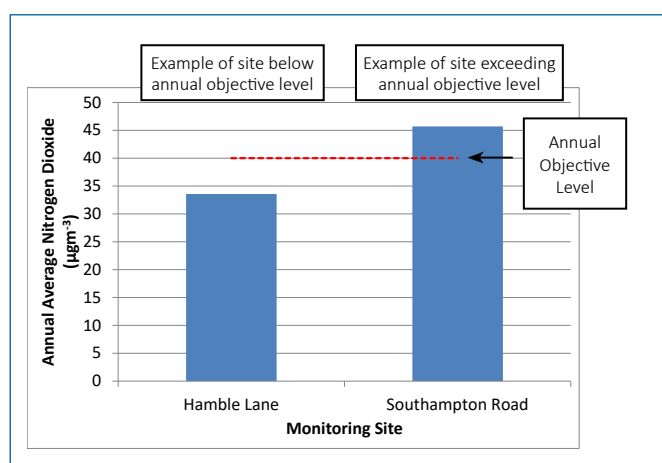
The individual Air Quality Action Plans in place for each of these are due for review and the Council is taking the opportunity to align these into a single Borough-wide plan.

The Council measures pollution levels both in the AQMAs and across the wider Borough. Results of this monitoring can be found [here](#).

These AQMAs have all been declared due to the levels of nitrogen dioxide exceeding the annual objective of $40\mu\text{g m}^{-3}$. Road transport is the most significant contributor to nitrogen dioxide levels in Eastleigh Borough. Long term trends in nitrogen dioxide have been studied, looking at levels over five years or more. Concentrations of nitrogen dioxide are decreasing at most sites, but many areas haven't

improved as much as expected and concentrations are still higher than the objective level in a number of places.

These locations are within the Eastleigh AQMA and Hamble Lane AQMA. In the case of Hamble Lane, a new area with levels higher than the objective has recently been confirmed, resulting in extension of this AQMA. Even though recent results from Botley High Street and the M3 corridor have not been higher than the objective, we continue to monitor pollution levels in these areas to support our work to further improve air quality. The actions in this plan will be essential for tackling the air pollution problem in Eastleigh Borough.

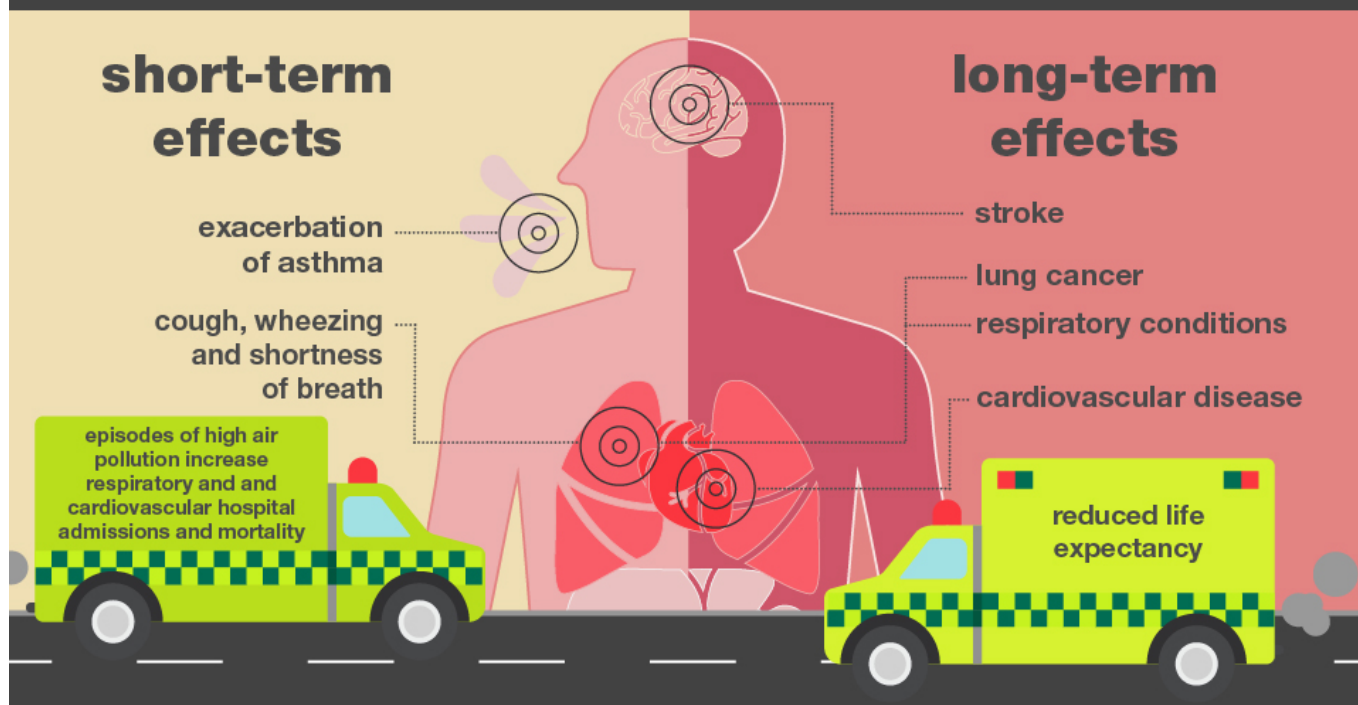


Air quality monitoring station

The health effects of air pollution

Air pollution is associated with a number of adverse health impacts and has been found to be the largest environmental risk to public health in the UK, highlighting the importance of taking action on this issue. Exposure to air pollution over short timescales can cause respiratory issues and long term exposure contributes to cardiovascular and respiratory diseases, ultimately reducing life expectancy. Poor air quality particularly affects those with existing respiratory issues, such as asthma, as well as disproportionately impacting on children and older people. Objective levels have been set to apply at locations where members of the public risk exposure, primarily frontages of residential properties, schools and hospitals.

Health effects of air pollution



www.gov.uk/government/publications/health-matters-air-pollution/health-matters-air-pollution

The action plan

This action plan builds on previous local action plans, with both existing actions and the addition of new ideas. The following 'Proposed Actions' tables show a list of these. They are aimed at the time period 2020 to 2025, but the plan will be kept updated and progress will be reported on a regular basis throughout this period before undergoing a full review when it comes to an end. As road traffic is the major contributor to air pollution in Eastleigh Borough, actions are mainly based around reducing vehicle emissions and encouraging other methods of travel. Although the focus is on areas with the highest exposures, the whole Borough is included as we recognise that these actions will impact the wider area and to ensure we take account of the connectivity between the issues faced in each location. Therefore the proposed actions list contains both overarching actions (grouped by Council theme) and targeted actions for individual locations (grouped by area).

To identify the most appropriate actions consideration must be given to:

- ▶ the likely impact on pollution levels
- ▶ any associated effects
- ▶ cost of implementation
- ▶ implementation timescale
- ▶ feasibility of implementation

Actions included below are expected to have a positive impact on air quality but include a mixture of funded projects, longer term aspirations where resources are not yet in place and schemes that require commitment from other public and private sector organisations.

To effectively tackle air pollution with this action plan, the Council, residents, businesses and other local groups and organisations all have a role to play. This is why it is important to have your input in creating a dynamic plan which everyone will work together to achieve.

SOURCES

Road
transport



34%*

Near roadsides

80%

Domestic
& Industrial
combustion



19%*

Energy
generation



22%*

Other
transport



17%*

*percentage of total NO_x emissions (2016) source: NAEI 2018

Original design by Defra Digital Comms

Government Clean Air Strategy 2019

Give us your views

For information on the consultation and to comment by filling out the questionnaire, please visit:

www.eastleigh.gov.uk/airquality

The questionnaire will be open from 2 September 2019 – 11 October 2019

If you require a paper copy of the plan and questionnaire, please contact:

environmental.healthdirect@eastleigh.gov.uk

There will also be two open evenings during the consultation period where you will be able to ask questions and discuss the plan with us. These drop-in sessions will be:

**Tuesday 17 September
5pm – 8pm**

Eastleigh House, Upper Market Street,
Eastleigh SO50 9RD

**Monday 23 September
3pm – 6:30pm**

Pilands Wood Centre, Chamberlayne
Road, Bursledon SO31 8DT

Proposed actions



Environment		
Action	Organisations Involved	Key Performance Indicator
<p>Monitor pollutant concentrations across the Borough, including:</p> <ul style="list-style-type: none"> • Replacement of old analysers • New analysers to measure extra pollutants • New monitoring locations • Trial of innovative low cost sensors 	<p>Eastleigh Borough Council</p> <p>External partners</p>	<p>% data capture for each calendar year</p> <p>Extended range of pollutants and number of locations monitored by 2022</p> <p>Low cost sensor trial completed and findings reported to DEFRA by June 2020</p>
<p>Work in partnership with other Councils and key groups</p>	<p>Eastleigh Borough Council</p> <p>Hampshire County Council</p> <p>Neighbouring authorities</p> <p>Local interest groups</p>	<p>Regular meetings held</p>
<p>Promote the use of electric vehicles and develop a network of publically available electric vehicle charging points across the Borough</p>	<p>Eastleigh Borough Council</p>	<p>Number of charging points added by 2025</p>



Transport		
Action	Organisations Involved	Key Performance Indicator
<p>Create a walking and cycling strategy to promote and encourage travel by these methods</p>	<p>Eastleigh Borough Council</p>	<p>Completion of strategy by April 2020</p>
<p>Continue to improve and extend the walking and cycling network in line with the new walking and cycling strategy</p>	<p>Eastleigh Borough Council</p> <p>Hampshire County Council</p> <p>Developers</p>	<p>Length of cycle path added</p> <p>Pedestrian schemes completed</p>

Transport		
Action	Organisations Involved	Key Performance Indicator
Run campaigns aimed at reducing the number of single occupancy cars on the Borough's roads	Eastleigh Borough Council	Number of campaigns run Number of people engaged
Work in partnership to improve public transport services by <ul style="list-style-type: none"> - improving routes and services - increasing the number of users - reducing vehicle emissions - securing sources of funding 	Eastleigh Borough Council Hampshire County Council Southampton City Council Rail operators Public transport providers Developers	Number of supported services Number of public transport users Proportion of buses classed EURO VI
Work with taxis and other licensed operators to reduce emissions	Eastleigh Borough Council Southampton City Council Taxi operators	Number of low emission taxi grants awarded
Promote and expand car clubs	Eastleigh Borough Council	Number of new car club locations
Increase availability of bicycle hire schemes	Eastleigh Borough Council External partners	Availability of hire schemes
Consult on encouraging ownership of low emission vehicles through differential parking charges	Eastleigh Borough Council	Consultation outcome by 2022
Use low cost sensor study to understand relationships between traffic movements and air quality to influence future road management and design	Eastleigh Borough Council Hampshire County Council	Availability of air quality and traffic data to be used as evidence
Engage with Hampshire County Council and Highways England on their highways improvement schemes to ensure they support our work on air quality	Hampshire County Council Highways England	Completion of highways improvement schemes



Health & Social Policy

Action	Organisations Involved	Key Performance Indicator
<p>Increase public awareness of air quality issues and the benefits of an active lifestyle through:</p> <ul style="list-style-type: none"> the Council's website the 'airAlert' service events campaigns 	<p>Eastleigh Borough Council</p> <p>Hampshire County Council</p> <p>Local interest groups</p>	<p>Number of campaigns run</p> <p>Number of people engaged</p> <p>Number of people subscribed to airAlert</p>
<p>Carry out school projects and campaigns including:</p> <ul style="list-style-type: none"> travel planning temporary road closures monitoring projects clean air campaigns 	<p>Eastleigh Borough Council</p> <p>Southampton City Council</p> <p>Hampshire County Council</p> <p>Public transport operators</p>	<p>Number of schools taking part</p> <p>Number of School Streets road closure events held</p>
<p>Provide information and advice on the use of solid fuel burners</p>	<p>Eastleigh Borough Council</p> <p>External partners</p>	<p>Number of campaigns run</p> <p>Number of people engaged</p>



Housing

Action	Organisations Involved	Key Performance Indicator
<p>Ensure that development adheres to policies set out in the emerging Local Plan relating to air pollution impacts and supports high quality sustainable development, particularly for developments in or close to AQMAs. These could include:</p> <ul style="list-style-type: none"> electric vehicle charging points parking policies low NOx boilers landscaping walking and cycling facilities 	<p>Eastleigh Borough Council</p> <p>Developers</p>	<p>Managed impact on air pollution</p> <p>Sustainability of new developments</p>



Economy & Regeneration

Action	Organisations Involved	Key Performance Indicator
<p>Eastleigh Borough Council will work to</p> <ul style="list-style-type: none"> • reduce business mileage • reduce vehicle fleet emissions • promote sustainable travel choices to staff, Councillors and visitors through travel planning 	Eastleigh Borough Council	<p>Number of business miles saved</p> <p>Amount of diesel and petrol purchased</p> <p>Number of low emission vehicles in use</p>
<p>Work with local businesses to reduce their emissions through:</p> <ul style="list-style-type: none"> • fleets • deliveries • staff travel plans • delivery service planning 	<p>Eastleigh Borough Council</p> <p>Local businesses</p> <p>External partners</p>	Number of businesses involved in projects
Support and encourage businesses to adopt flexible working practices through improved connectivity	<p>Eastleigh Borough Council</p> <p>Local businesses</p>	Number of businesses engaged
Work with Southampton Airport to minimise the impact of their operations on air quality	<p>Eastleigh Borough Council</p> <p>Southampton Airport</p>	<p>Number of meetings attended</p> <p>Staff and visitor travel plans in place</p>



Local Area: Eastleigh



Eastleigh AQMA

Declared in 2005. Follows the A335 Southampton Road, Romsey Road & Leigh Road.

Amended in 2015 to extend a short way along Woodside Avenue, Twyford Road & Bishopstoke Road

M3 AQMA

Declared in 2006. Covers an area extending either side of the M3 motorway, from junctions 12 to 14.



Local Area: Eastleigh

Action	Organisations Involved	Key Performance Indicator
Further study to learn more about the proportion of different vehicles by age and type in Eastleigh	Eastleigh Borough Council Consultants	Completion of study by 2021
Carry out trial of innovative monitoring equipment	Eastleigh Borough Council External partners	Data collected for key junctions in Eastleigh
Consider pedestrianisation of Market Street, initially as a temporary event	Eastleigh Borough Council	Temporary closure event organised by June 2020 Impact of closure assessed by December 2020
Install electric vehicle charging points to include: <ul style="list-style-type: none"> Aldi, Chestnut Retail Park Romsey Road Car Park, Upper Market Street. 	Eastleigh Borough Council	Two charge points installed by 2020 Number of charge points installed by 2025

Local Area: Eastleigh		
Action	Organisations Involved	Key Performance Indicator
Continue to seek approval and funding for the Chickenhall Lane Link Road	Eastleigh Borough Council Hampshire County Council Department for Transport	Link road approved

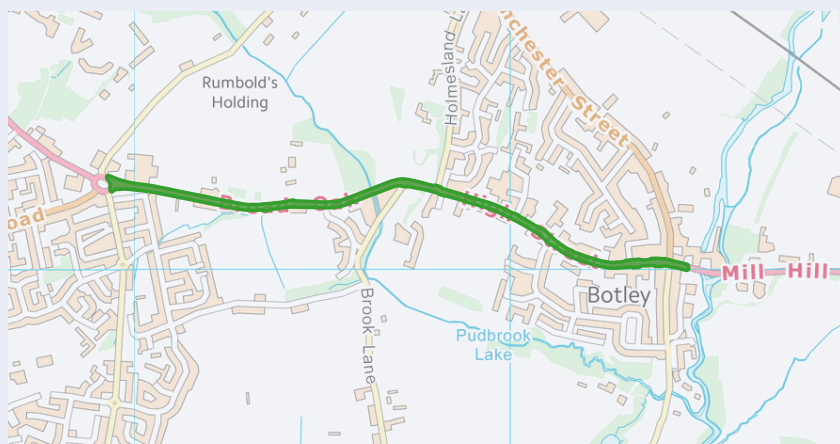
Local Area: Chandler's Ford & Hiltingbury

Local Area: Chandler's Ford & Hiltingbury		
Action	Organisations Involved	Key Performance Indicator
Provide an off road cycle/pedestrian route along Hut Hill, linking Chandler's Ford with Chilworth	Hampshire County Council	Completion of scheme by 2021
Consider potential locations and funding sources to install electric vehicle charging points	Eastleigh Borough Council External partners	Number of new charge points installed
Investigate expanding Co-Wheels electric vehicle locations to Chandler's Ford	Eastleigh Borough Council	New Co-Wheels location in Chandler's Ford

Local Area: Bishopstoke, Fair Oak & Horton Heath

Local Area: Bishopstoke, Fair Oak & Horton Heath		
Action	Organisations Involved	Key Performance Indicator
Improve traffic flow and increase facilities for active travel along Bishopstoke Road	Eastleigh Borough Council Hampshire County Council	Completed traffic study by Spring 2020 Improvements implemented
Consider potential locations and funding sources to install electric vehicle charging points	Eastleigh Borough Council External partners	Number of new charge points installed
Use the development at Horton Heath as an opportunity to promote sustainable practices	Eastleigh Borough Council	Number of sustainable initiatives implemented in development

Local Area: Hedge End, West End & Botley



High Street Botley AQMA

Declared in 2011. An area covering a number of properties along High Street from the Maypole roundabout to the Winchester Street junction.

Local Area: Hedge End, West End & Botley		
Action	Organisations Involved	Key Performance Indicator
Investigate expanding Co-Wheels electric vehicle locations to Botley	Eastleigh Borough Council	New Co-Wheels location in Botley
Consider potential locations and funding sources to install electric vehicle charging points	Eastleigh Borough Council External partners	Number of new charge points installed
Delivery of Botley Bypass scheme	Hampshire County Council	Works commence by 2021 Completion of Bypass
Following completion of Botley Bypass, reduce HGVs using High Street	Eastleigh Borough Council Hampshire County Council	Number of HGVs on Botley High Street

Local Area: Bursledon, Hamble-le-Rice & Hound



Hamble Lane Area AQMA

Declared in 2006 to cover an area covering a number of properties along Hamble Lane between the junctions with Jurd Way and Portsmouth Road. Amended in 2011 to extend north to Windhover roundabout.

Amended in 2019 to include Windhover roundabout and the A27 to the river Hamble.



Local Area: Bursledon, Hamble-le-Rice & Hound

Action	Organisations Involved	Key Performance Indicator
Further study to learn more about the proportion of different vehicles by age and type in the Hamble Lane Area AQMA	Eastleigh Borough Council Consultants	Completion of study
Liaise with neighbouring local authorities on their activities on the A27	Eastleigh Borough Council Southampton City Council Fareham Borough Council	Information sharing
Work to increase the number of people using Hamble, Netley and Bursledon railway stations	Eastleigh Borough Council Community Rail Partnership	Number of people using stations
Investigate expanding Co-Wheels electric vehicle locations to Hamble	Eastleigh Borough Council	New Co-Wheels location in Hamble

Local Area: Bursledon, Hamble-le-Rice & Hound

Action	Organisations Involved	Key Performance Indicator
Highway improvements for Hamble Lane	Hampshire County Council	Completion of scheme
Highway improvements for M27 J8 and Windhover Roundabout	Highways England	Works commence by March 2020 Completion of scheme
Consider potential locations and funding sources to install electric vehicle charging points	Eastleigh Borough Council External partners	Number of new charge points installed
Improve air circulation along Hamble Lane and the A27 through the management of trees	Eastleigh Borough Council Hampshire County Council	Completion of scheme by 2023